



City of Topeka

[Home](#)[Data Catalog](#)[About](#)[Open Government](#) ▾[topeka.or](#)[Sign In](#)

From the City Manager's Desk

January 7th, 2019



Fire Department Provides Free Smoke Alarm

The City of Topeka Fire Department Smoke Alarm Program, is sponsored by the American Red Cross. This program provides lifesaving benefits to the citizens of our community.



Homes without a smoke alarm can apply to have a free one. Alarms will be installed by members of the Topeka Fire Department

The Topeka Fire Department will also survey of any current smoke alarms in the home; including replacing batteries; replacing outdated alarms and education on testing and maintaining smoke alarms in the home. Smoke alarms for the hearing impaired are also available.

Apply To Get a Free Smoke Alarm:

Smoke alarm quantities are limited and will be on a first come, first serve basis. To apply for the program,

fill out this [application](#), then submit the application. You may also print out the form and return it to:

Topeka Fire Department

Attn: Smoke Alarm Program

324 SE Jefferson St.



Topeka, Kansas 66607

For assistance in submitting your application, please call 785-368-4000

Brush Up TOPEKA

FREE HOUSE PAINTING!

The City of Topeka is partnering with the Group Workcamps Home Repair Program. Individuals and youth from around the country will spend July 7-13, 2019 in our community performing home painting projects.

NO GIMMICKS – NO LOANS – NO LIENS

To be eligible, you must meet the following guidelines:

- Registered Home owner
- Home is Single Story & less than 28' in height
- Someone 18 years of age or older must be present during time of work
- Must income qualify according to guidelines (right)
- All household members will be checked for listing on the Kansas Offender Registry
- Project must be able to be completed in one week

APPLY AT 620 SE MADISON ST.
FIRST COME, FIRST SERVED

FOR MORE INFORMATION, CONTACT:
Shane Wilson 785-368-4492

INCOME GUIDELINES:

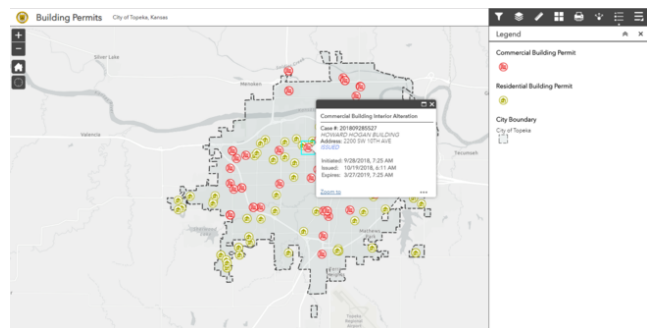
1 person -	\$38,450
2 persons -	\$43,950
3 persons -	\$49,450
4 persons -	\$54,900
5 persons -	\$59,300
6 persons -	\$63,700
7 persons -	\$68,100
8 persons -	\$72,500

SPONSORED BY:




Building Permit Map

Have you ever asked "What are they building there?" Now you can view a map of current and previously issued commercial and residential building permits!



The building permit map shows all commercial and residential building permits in Topeka. Information includes the date the permit was initiated, issued and when it expires.

A promotional poster for a conservation event. The background is a photograph of a grassy field with a large tree on the left and a cloudy sky. The text is overlaid in various colors and fonts. The main title is in large, bold, blue letters. The guest speaker information is in white and blue. The date and time are in large, bold, blue letters. The event name is in large, bold, blue letters. The invitation text is in white. The program is free. Contact information is in white on a dark blue background. The logo for Conservation Connection Topeka Zoo is in the bottom right corner.

**PRAIRIE CONSERVATION
IN YOUR BACKYARD**

Guest Speaker
Courtney Masterson from Native Lands, LLC

**JAN. 10, 2019
6:30–7:30PM**

GARY K. CLARKE LIVING CLASSROOM

*Join us to learn more about our amazing
grasslands and the animals that depend on them*

FREE PROGRAM

*Contact Dennis at 785-368-9134 or
ddinwiddie@topeka.org for more details*

**CONSERVATION
CONNECTION
topeka zoo**
& conservation center

Recent Updates

- There have been 67 broken [water mains](#) in December with 874 breaks in 2018. In 2017 there were 442 breaks total.
- The two tree planting projects and the landscaping project at five roundabout projects are complete. A total of 185 trees were planted



during those projects.

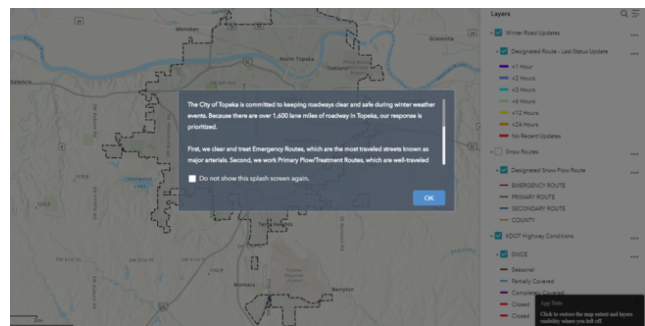
- Budget and Performance staff are meeting with city departments to prepare the 2020-2029 Capital Improvement Plan, which will be considered by the Governing Body beginning in February.



Snow and Ice Removal Plan

Winter weather is here. Check out the city's [snow and ice removal plan](#).

You can also see a [map](#) of all the streets in Topeka to see if they have been treated.



Priority 1:

Primary Streets: Arterial Streets
and Emergency Snow routes

Service Level – Plowing will typically begin with 2" of snow accumulation. Complete snow and ice control within 24 hours of snowfall ending.

Priority 2:

Secondary Streets: Collector
Streets

Service Level – Plowing will typically begin with 4" of snow accumulation. Complete snow and ice control within 24 hours after Priority 1 completion.

Priority 3:

Residential Streets: Local Streets

Service Level – Plowing will typically begin with 6" of snow accumulation to ensure that they are passable to emergency services and general public as necessary upon



completion of Priorities 1 through
2.

Coming up

- City Council Meeting, January 8th at 6 p.m.
-



Brent Trout

This weekly report is presented to you from the office of City Manager Brent Trout.

[For other weekly reports, visit the City's website](#)

This report was produced through our open data portal. We have several other open data portals to help connect you with the work we do, including portals that let you:



- [Visualize Topeka's \\$270M budget](#)
- [See Topeka's expenses, one check at a time](#)
- [Navigate our major infrastructure projects](#)
- [Track departments' progress toward our goals](#)

[Home](#)[About](#)[Terms of Use](#)[Contact](#)[Help](#)[topeka.org](#)

© 2019 City of Topeka 2018

Powered By  Socrata